



# Magnetism 2017

**3–4 April 2017**  
**University of York, York, UK**

Organised by the IOP Magnetism Group

**<http://magnetism2017.iopconfs.org>**



# Magnetism 2017

## Contents

Contacts .....	2
Committee .....	2
Sponsors .....	2
Location .....	3
Accommodation .....	3
Travel .....	3
Internet .....	4
Registration .....	4
IOP Membership .....	4
Catering .....	5
Social programme .....	6
Information for presenters .....	6
Scientific programme .....	7
Health and safety .....	7
Non-smoking policy .....	7
First Aid .....	7
General information .....	7
Exhibitors .....	8
Map .....	11



# Magnetism 2017

Please read this handbook in preparation for the event as it includes all the information you will need while onsite at the conference. If you have any questions or require further information, please contact the conference organiser Dawn Stewart or the conferences team. During the conference, Dawn Stewart plus another member of the team will be onsite throughout the event to answer any questions.

Dawn Stewart  
Tel: +44 (0)20 7470 4910  
Mobile: +44 (0)79171 81183  
E-mail: [dawn.stewart@iop.org](mailto:dawn.stewart@iop.org)

Conferences team  
Tel: +44 (0)20 7470 4800  
E-mail: [conferences@iop.org](mailto:conferences@iop.org)

If you encounter any problems at the conference, please report them to the conferences team who will make every effort to rectify the issues as soon as possible.

## Organising committee

Gonzalo Vallejo Fernandez, University of York, UK  
Thomas Moore, University of Leeds, UK

Organised by the IOP Magnetism Group

**IOP** | Institute of Physics  
**Magnetism Group**

## Sponsors



CCP Magnetism



STFC – ISIS Research Groups

We acknowledge the UK Chapter of the IEEE Magnetics Society for their student support



# Magnetism 2017

## Location

The conference will be held at the University of York from 3-4 April 2017. All lectures, lunch, exhibition and posters will be held in the Exhibition Centre.



University of York  
Exhibition Centre  
Heslington, York  
YO10 5NA, UK

## Accommodation

You can visit York Tourist board for a list of hotels - <http://www.visitthetownofyork.org/book/>

## Travel

A location map for the University of York can be found online at [www.york.ac.uk/about/maps/](http://www.york.ac.uk/about/maps/)

## By air from UK airports

If you are flying to the UK, choose [Leeds-Bradford](#) or [Manchester airports](#). Trains from Leeds to York are frequent and take less than 25 minutes. Trains direct to York from Manchester Airport take approximately one and a half hours.

## By train

York has good public links. Trains to York from London take just under two hours, with trains from Edinburgh taking just under two and a half hours. A taxi from the station to the Exhibition centre at the University of York will cost approximately £10.00.

For further information contact [National Rail Enquiries](#) (tel: +44 (0)8457 484950)

## By bus

There are frequent buses between the city centre and Heslington West via the [number 66](#). Ensure you alight at the [University Way stop](#) and follow the campus signage to your destination.

## By car

The postcode for using a sat nav is **YO10 5NA**

You can plan your route online using one of the free route planners - examples are [The AA](#) or [The RAC](#).



# Magnetism 2017

## Parking

Parking is limited. It is based on first-come first-served basis. If you require parking, please email [dawn.stewart@iop.org](mailto:dawn.stewart@iop.org) to check availability.

To obtain further information about parking on campus visit the web site at <https://www.york.ac.uk/admin/estates/transport/parking/>; please note that we cannot guarantee spaces.

## Visas

Citizens of the European Union do not need a visa to enter Britain. If you are from any other country, find out about visa requirements before you travel by visiting <http://ukvisas.gov.uk>.

## Wi-Fi

There are two free wi-fi connections available to visitors to campus – Eduroam for visitors from other universities: CityConnectWifi for all other visitors. Connection for CityConnectWifi is via a social media account or by completing a short web-form.

CityConnect allow visitors to access Wi-fi, without needing a temporary IT Services account. CityConnect is an open network. Once logged-in, the session will remain active for 24 hours.

## Registration

Registration will be held in the Exhibition Centre. Each participant will receive a pen, a notepad, a copy of the programme and a lapel name badge. A copy of the abstract book will be sent to you electronically.

Participants are asked to wear their badge at all times to help with security and to enable you to identify fellow participants. Replacement badges can be issued at the registration desk. On departure, please return your badge to be recycled.

### Registration opening times are as follows:

Date	Time	Location
Monday 3 April	09:00 – 18:30	Exhibition Centre Building
Tuesday 4 April	08:30 – 17:00	Exhibition Centre Building

## IOP Membership

Membership of the Institute is for everyone who has an interest in the subject and its future. The Institute actively promotes physics to external audiences, increasing awareness of the importance of physics in government, education and industry. Our members come from diverse backgrounds and follow all kinds of different careers; many are directly involved in physics but as many are using their physics training in a wide range of businesses.

For more information, please visit [www.iop.org/membership](http://www.iop.org/membership)

Membership benefits include:

- Physics World - the world's leading physics magazine, monthly by post, online or as an app
- IOP Journal downloads
- Careers information and resources
- Professional Status



# Magnetism 2017

- Academic dress
- Learning online courses
- '@physics.org' email address
- Support and grants
- Members' room
- Meeting rooms
- Member rate for IOP conferences
- Discount on author charges (NJP)
- Business journals
- Making money out of ideas
- Local branch affiliation
- Specialist 'Groups'
- Membertalk
- IOP LinkedIn group

## Catering

The registration fee is inclusive of refreshments, lunch and the social programme. Please refer to the table below for locations and timings.

Date	Event	Time	Location
Monday 3 April	Arrival refreshments	09:00-10:00	Exhibition Centre
	Morning refreshments	11:15-11:45	Exhibition Centre
	Lunch and exhibition	13:00-14:30	Exhibition Centre
	Refreshments	16:00-16:30	Exhibition Centre
	Posters, reception and exhibition	17:30-18:30	Exhibition Centre
	Conference dinner	19:00	The Principal York Hotel
Tuesday 4 April	Morning refreshments	10:00-10:30	Exhibition Centre
	Lunch and exhibition	12:45-14:00	Exhibition Centre
	Refreshments	15:15-15:45	Exhibition Centre

Participants with special dietary requirements are asked to notify the conference office, if they have not already done so when registering, prior to their arrival. Those with special dietary requirements other than vegetarian are asked to make themselves known to the catering team. It will not be possible to provide an alternative menu unless prior notification has been received. Please email [dawn.stewart@iop.org](mailto:dawn.stewart@iop.org) if you have any queries.

Nut allergies – unfortunately the venue cannot provide assurances that food has not been cross-contaminated with traces of nuts during ingredient processing at manufacture's site, and during food preparation on site. For this reason, we are unable to provide guarantees that any of the food is free from nuts or trace elements.

<http://www.york.ac.uk/food-and-bars/about-our-food/>





# Magnetism 2017

## Social programme

### Drinks reception - 3 April 2017 - Exhibition Centre, University of York

A drinks reception will take place alongside the exhibition and poster session.

Time: 17:30 – 18:45

### Conference dinner - 3 April 2107 - The Principal York Hotel, York

The conference gala dinner will take place at the Principal York hotel. A drinks reception will precede the dinner. Coaches will depart outside the University of York and will return to the University after the dinner.

Time: 18:45 Coach depart from outside the Exhibition Centre.

If you are staying off campus, you will need to make your own arrangements for your return journey.

The Principal York hotel is situated around the corner from York train station, this grand hotel with Minster church views was built in 1878, and sits on landscaped grounds with curving paths and a fountain.

The above events are included in the registration fee. Please confirm your attendance when registering online.

## Information for presenters

### Oral presentations

The audio-visual equipment included in the lecture theatre is an LCD projector, screen. If you require any additional equipment, please email [dawn.stewart@iop.org](mailto:dawn.stewart@iop.org) Presenters are asked to prepare their presentations to match the time allocated in the programme as these will be strictly enforced by the session chairs.

Presentations should be structured to include an introduction, the main content and conclusions. Visual aids (e.g. maps, charts etc.) can be used but you are advised to keep the information simple, use colour and contrast for emphasis and use a large enough font (minimum 15 point) to ensure legibility.

Direct connection of personal laptops (with set-up in the break prior to the corresponding session) is the alternative. For those using a PC laptop, please make sure you have a VGA output. If presenting from a Macintosh, please bring a VGA cable.

If you need an adapter, please bring one with you as we are unable to supply one.

### Poster displays

Posters will be on display for the duration of the conference in the Exhibition Centre. There will be a dedicated poster session taking place on **Monday 3 April at 17:30 – 18:30**. During this session, authors are asked to remain next to their posters to answer questions.

### Displaying and removing posters

Posters can be mounted from **Monday 3 April at 09:00** and must be removed by **15:45 on Tuesday 4 April**. Any poster not removed by this time, will be recycled.

## Dimensions



# Magnetism 2017

The poster board dimensions are 2.13m high x 1.22m wide in portrait format. All posters must fit within these measurements. Posters must be prepared in advance of the conference as it will not be possible to print them on-site. Fixing material will be supplied to mount your poster. (Pins are not permitted on the boards).

## Scientific programme

Please refer to the website at <http://magnetism2017.iopconfs.org/Monday> for the latest programme. A copy of the programme will be included in your conference pack which you will receive on arrival at the conference.

## Safety and emergency evacuation procedures

In the unlikely event of a fire, an alarm will sound. Please evacuate the building immediately. Emergency exits are well sign posted. Do not re-enter the building until instructed to do so by a member of staff or the fire brigade.

## Non-smoking policy

The University is a non-smoking building.

## First Aid

If you fall ill or injure yourself during the conference, please report the incident to a staff member. If an ambulance is required then call Security on 01904 32333 or just 3333 from an internal phone, they will assist.

## General information

### Payment

The organiser reserves the right to refuse admission to any participant who has failed to pay their registration fee prior to the start of the event.

**Money** - Britain's currency is the pound sterling (£). Credit cards - especially Visa and Mastercard - are widely accepted in restaurants, bars, cafés and shops. American Express and Diners Club cards are less commonly accepted. There are plenty of cash machines (also known as cashpoints or ATMs) available in and around York city centre.

**VAT** - Value-added tax (VAT) is a 20% sales tax levied on most goods and services except basic food items, books and children's clothing. Restaurants must, by law, include VAT in their menu prices. If you are travelling for leisure or business purposes, you may be eligible for a VAT refund. The VAT refund scheme is called the Retail Export Scheme or Tax-Free Shopping. [www.hmrc.gov.uk/vat/sectors/consumers/overseas-visitors.htm](http://www.hmrc.gov.uk/vat/sectors/consumers/overseas-visitors.htm)

**Electricity** - Voltage is **230v AC, 50Hz**. Most electrical items from the UK will work without any conversion. Most electrical items from Europe will work with an adapter which can be purchased in most electrical and travel shops. Some electrical items from the USA will not work in the UK. Check the voltage ratings which should be marked on the appliance.

**Telephone** - If you're visiting the University of York from abroad, don't forget that the UK dialling code is +44 (which replace the 0) and to check your own country's code before you travel. If you are travelling to York





# Magnetism 2017

from abroad, using your mobile phone may cost you more than it does at home. Check your network's roaming charges before you travel.

## Exhibitors

### Stand 1 – SciMed

Since its founding in 1979, Scientific & Medical Products (SciMed) has been a highly successful distributor of laboratory and process equipment. We exclusively represent a number of leading manufacturers in the UK and Ireland and have recently been appointed the distributor for several companies in France and other selected regions around Europe. We are the sole UK distributor for the Rigaku Smartlab XRD's and XRF's.

[www.scimed.co.uk](http://www.scimed.co.uk)

### Stand 2 – Farnell element14

Farnell element14 brings together fast delivery of the latest electronic products and solutions, access to industry experts, technical information and tools.

[www.farnell.com](http://www.farnell.com)

### Stand 3 – Scienta Omicron

Scienta Omicron is the leading innovator in Surface Science. the company provides top capabilities for the research community through its technology leadership in electron spectroscopy, scanning probe microscopy and thin film deposition. These capabilities are available in custom tailored solutions from one source with worldwide sales and service groups.

[www.scientaomicron.com](http://www.scientaomicron.com)

### Stand 4 – IOP Publishing

IOP Publishing provides a range of journals, books, websites, magazines, conference proceedings and services through which leading-edge scientific research is distributed worldwide. IOP Publishing is central to the Institute of Physics, a not-for-profit society. Any financial surplus earned by IOP Publishing goes to support science through the Institute's activities.

[iop.publishing.org](http://iop.publishing.org)

### Stand 5 - Durham Magneto Optics Ltd

At Durham Magneto Optics Ltd we specialise in advanced scientific instrumentation for nanotechnology research and development. Our product range includes a family of magneto-optical Kerr effect magnetometers (NanoMOKE3) and a family of direct-write laser lithography machines (MicroWriter ML).

[www.durhammagnetooptics.com](http://www.durhammagnetooptics.com)

### Stand 6 – MANTIS and SIGMA Surface Science

ANTIS Deposition and our partner SIGMA Surface Science are dedicated to the development and manufacture of high-quality systems and components for cutting-edge applications in, nanotechnology, thin film deposition and surface analysis. We enable researchers to both create and analyse thin films for new advanced materials and device development.

[www.mantis-sigma.com](http://www.mantis-sigma.com)

### Stand 7 - Cryogenic Ltd

Cryogenic Ltd continues to lead the market in cryogen free technology to the construction of high field measurement systems to 18 Tesla with a Vibrating Sample Magnetometer, Ultra low Temperature 3D vector



# Magnetism 2017

field magnet with temperatures down to 10 mK, interchangeable cryogen free magnet with He-3 and DR inserts, 7 Tesla magnetic capable of rapid ramp-up operation.

[www.cryogenic.co.uk](http://www.cryogenic.co.uk)

## **Stand 8 – Elliot Scientific**

Elliot Scientific is the Lake Shore representative for the UK and Ireland. Lake Shore's products for materials research and characterization include high-sensitivity VSM and Hall Effect systems, plus cryogenic probe stations with integrated magnetic field.

[www.elliotscientific.com](http://www.elliotscientific.com)

## **Stand 9 – Oxford Instruments NanoScience**

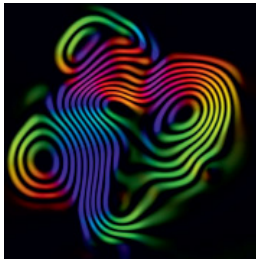
Oxford Instruments NanoScience designs, supplies and supports market-leading research tools that enable quantum technologies, new materials and device development in the physical sciences. Our tools support research down to the atomic scale through creation of high performance, cryogen free low temperature and magnetic environments, based upon core technologies in low and ultra-low temperatures, high magnetic fields and system integration.

[www.oxford-instruments.com/business/nanotechnology/nanoscience](http://www.oxford-instruments.com/business/nanotechnology/nanoscience)

## **Stand 10 – LOT-QuantumDesign Ltd**

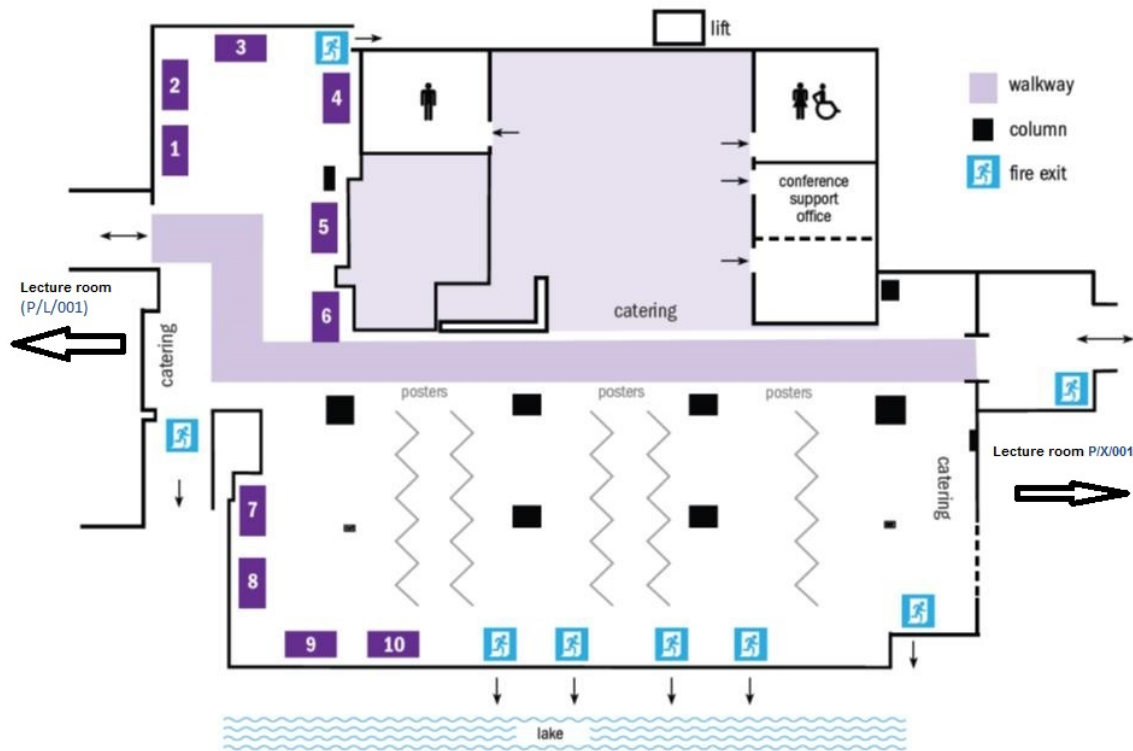
LOT-QuantumDesign are a leading supplier of Materials Science and Cryogenics instrumentation. Visit stand 10 to discuss our range of Magnetometers and Physical Property Measurement Systems from Quantum Design and Optical Cryostats from Montana Instruments.

[www.lot-gd.co.uk](http://www.lot-gd.co.uk)

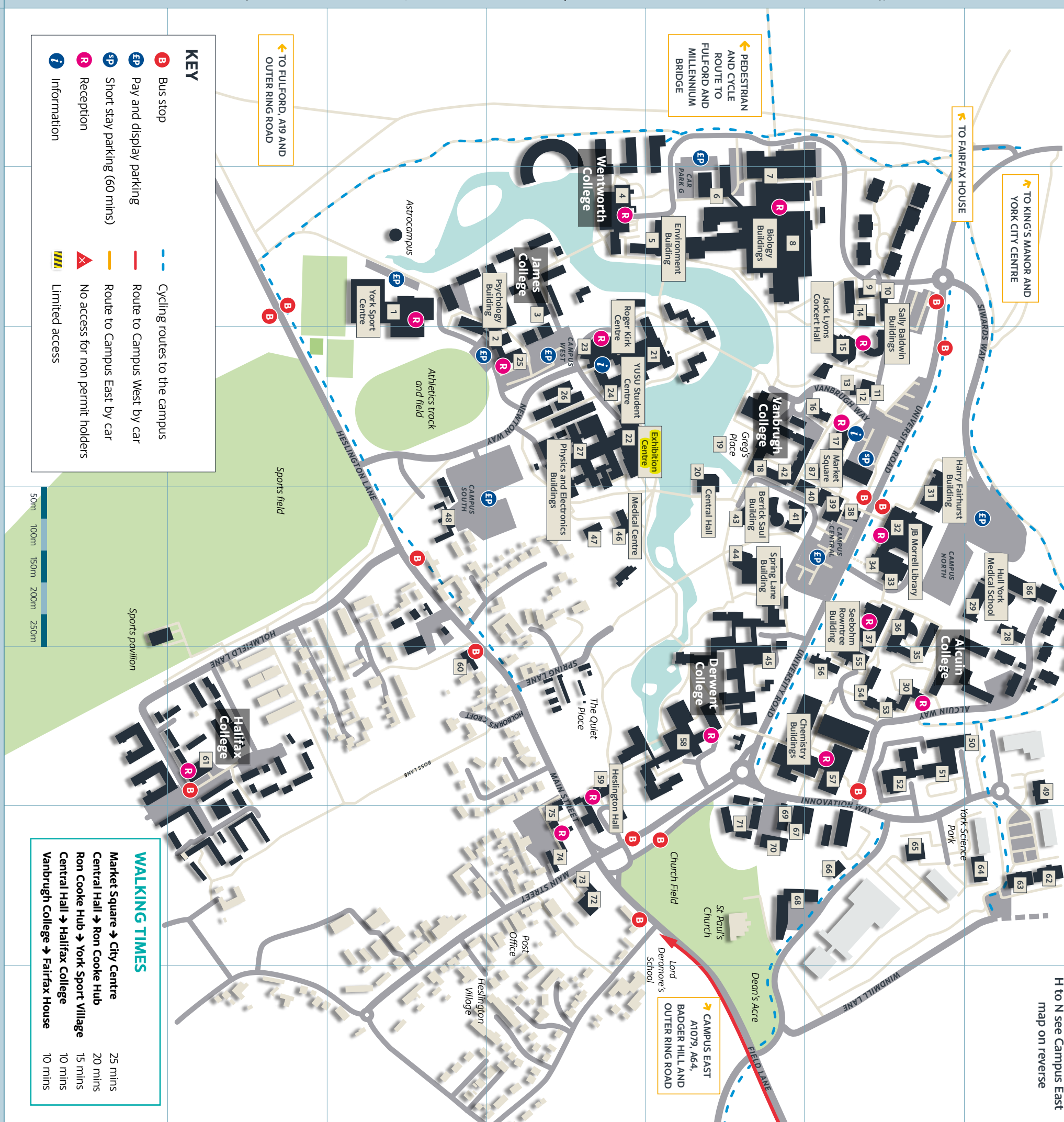


# Magnetism 2017

Exhibition floor plan



CAMPUS WEST



Key

<b>A</b> Accommodation Services	C2 17	<b>D</b> 32
Alcun College	E2 30	<b>K</b> 30
Alcun A and B Block	E2 35	See city map on reverse
Alcun C Block	E2 56	<b>L</b> Language and Linguistic Science
Alcun East Wing	E2 55	King's Manor
ARRC (Alcun Research Resource Centre)	D2 36	See city map on reverse
Archaeology	D3 43	See city map on reverse
Berrick Saul Building	E2 51	<b>M</b> Management School
Biocentre	B3 8	Market Square
Borthwick Institute for Archives	D2 33	Mathematics
Campus Services	C2 87	Media Relations
Careers	D3 41	Media Centre
Cash and Fees Office	C2 87	Medical Centre
Catalyst	I2 76	Medieval Studies
Central Hall	C3 20	More House
Chemistry	E2 57	Music
Chemistry Hub	F3 69	Music Box Office
Commercial Services	F1 62	National Science Learning Centre
Computer Science	J12 80	Natural Sciences/Biology R Block
Conference Office	C2 16	Nightline
Constantine College	L11 84	Norman Rea Gallery
Dalhous Farm	D5 48	Norman Study Centre
Derwent College	E3 58	Nursery
Derwent Extension	F3 71	Open Door Team
Design Solutions	F4 73	Office of Philanthropic Partnerships and Alumni (OPPA)
Disability Services	B2 9	Piazza Building
Drama Barn	C2 11	Philosophy
Economics and Related Studies	E2 54	Physics
Education	E3 58	Politics
Effective Education, Institute for	D3 43	Politics, Economics and Philosophy (PEP)
Eighteenth Century Studies	See city map on reverse	Print Solutions
Electronics	C4 27	Providence House
Electronics Audio Lab	F2 66	Psychology
English and Related Literature	E3 58	Quantum House
English Language Teaching (ELT)	E3 58	Registry Services
Enterprise House	E1 49	Research Centre for Social Sciences
Environment	B3 5	Research and Enterprise
Equality and Diversity Office	B2 9	Research and Enterprise (Research Grants, Contracts, Strategy and Policy)
<b>Exhibition Centre</b>	C4 22	Roger Kirk Centre
Franklin House	D1 28	Ron Cooke Hub
The Garage	C2 12	Sally Baldwin Buildings
Global Programmes, Centre for	E3 58	Sally Baldwin Buildings B block
Goodricke College	J11 78	Science Education/CIEC
Graduate Students' Association (GSA)	C3 18	Security Centre
Genesis T-5	F3 68	Seeborn Rowntree Building
Genesis 6	F2 66	Social Policy and Social Work
Greg's Place	C3 19	Social Policy Research Unit
Grimston House	C2 16	Social and Political Sciences
Harry Fairhurst building	B6 61	Sociology
Health Economics, Centre for	E2 35	Spring Lane Building
Health, Safety and Security	C2 16	Stockholm Environment Institute (SEI)
Health Sciences	D2 37	Student Administration building
Helix House	F1 62	Student Recruitment and Admissions (The Stables)
Henry Wellcome building	C4 25	Student Financial Support Unit
Heslington Hall	E4 59	Student Support Hub
History of Art	C3 18	Students' Union (YUSU)
History	C3 18	Theatre, Film and Television
Home Farm	F4 74	Vanbrugh College
Housing Policy, Centre for	D2 36	The Warren
Hull York Medical School (HYMS)	D1 29	Wentworth College
Human Resources	E4 59	Wolfson Atmospheric Chemistry Laboratories
Humanities Research Centre	D3 43	Women's Studies, Centre for
Hyperpolarisation in MR, Centre for	E1 50	Writing Centre
Immunology and Infection, Centre for	B3 6	York Health Economics Consortium
Information Centre	C2 17	York JEOL Nanocentre
Innovation Centre	E2 52	York Neuroimaging Centre
International Pathway College	B3 8	York Plasma Institute
IT Services building	D2 39	York Plasma Institute Laboratories
IT Support	D2 32	York Sport Centre
James College	B4 3	York Sport Centre
Jack Lyons Concert Hall	C2 15	York Sport Village
James College P and Q blocks	C4 26	YUSU - Student Centre

**Institute of Physics**

76 Portland Place, London W1B 1NT, UK

Telephone: +44 (0)20 7470 4800

**[www.iop.org/conferences](http://www.iop.org/conferences)**

Registered Charity Number: 293851